

Animations Disclaimer

We hope you find the information on our website and resources useful.

PowerPoint

†

This resource has been designed with animations to make it as fun and engaging as possible. To view the content in the correct formatting, please view the PowerPoint in "slide show mode." This takes you from desktop to presentation mode. If you view the slides out of "slide show mode," you may find that some of the text and images overlap each other and/or are difficult to read.

To enter slide show mode, go to the **slide show menu tab** and select either **from beginning** or **from current slide**.

Slides

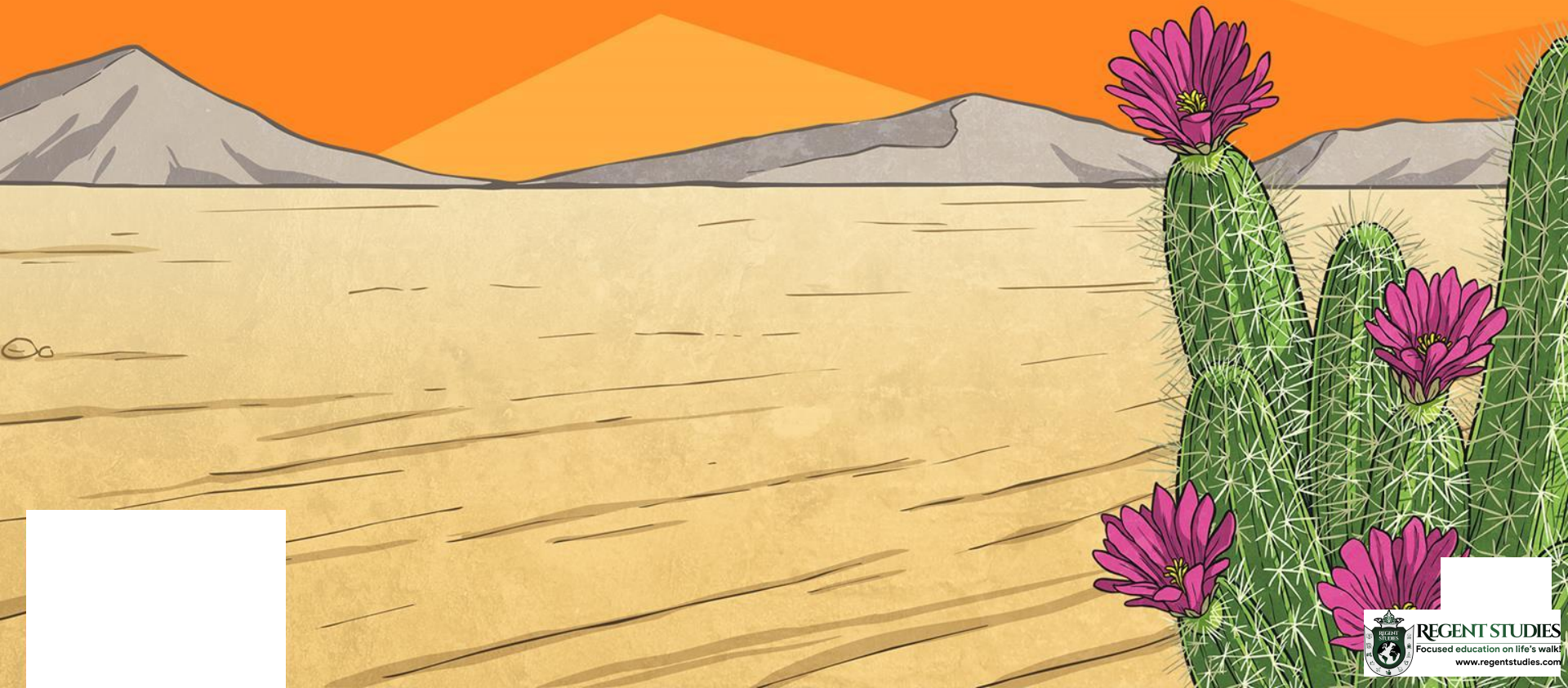
This resource has been designed with animations to make it fun and engaging for children.

To ensure the content has the correct formatting, please view the presentation in "present mode." This takes you from edit mode to presentation mode. If you view the slides out of "present mode," you may find that some of the text and images overlap each other and/or are difficult to read.

To enter present mode, go to the "**Present**" tab and select "**Present from beginning**" or simply click "**Present**" to play from the current slide.

You may wish to delete this slide before beginning the presentation.

Desert Biome: Plant and Animal Adaptations Quiz



Deserts are hot at night.

True or false?

Try again!

That's correct. The dry air and clear skies, in most deserts, lead to large ranges in temperature between day and night. Light, overnight frosts in winter are not unusual.

Why do some plants in hot deserts have small leaves?

Try again!

Try again!

That's correct!

The color of a leaf helps reflect heat from the sun.

True or false?

That's correct. Silvery-colored leaves of dune plants absorb less heat than darker-colored leaves. Leaves that have tiny "hairs" covering them also lose less water.

Try again!

Why are some plant roots in hot deserts wide and shallow?

That's correct!

Try again!

Try again!

Why do some plants have spines and toxins in the hot desert?

Try again!

Try again!

That's correct!

What is transpiration?

That's correct!

Try again!

Try again!

Why do plants have waxy leaves in hot deserts?

Try again!

That's correct!

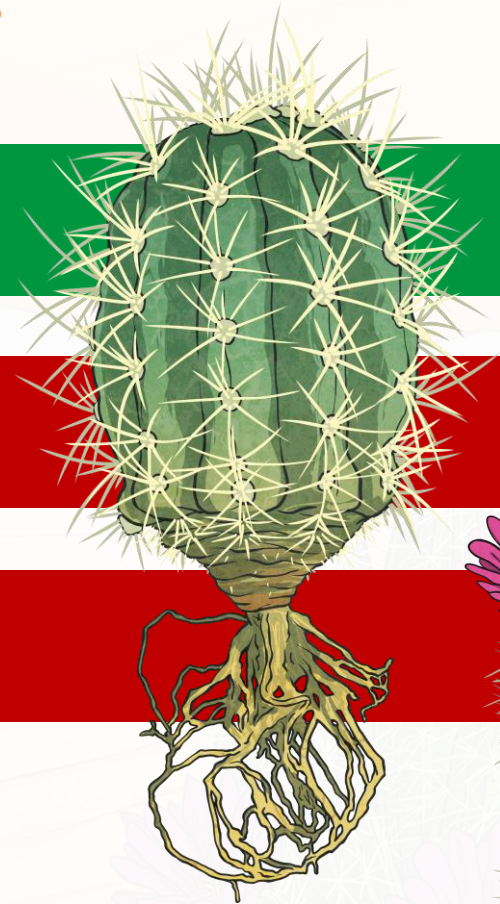
Try again!

What is the name given to roots that extend deep into the soil to reach water?

That's correct!

Try again!

Try again!



Plants that retain water are called...

Try again!

That's correct!

Try again!



How do large ears help the bilby and fennec fox survive in a hot desert?

Try again!

Try again!

That's correct!

Many desert animals are nocturnal. True or false?

That's correct. They are active at night time when temperatures are cooler. Did you know the bilby is a nocturnal desert animal?



A camel's hump is...



That's correct! It helps the camel go for days without water or food.

Try again!

Try again!

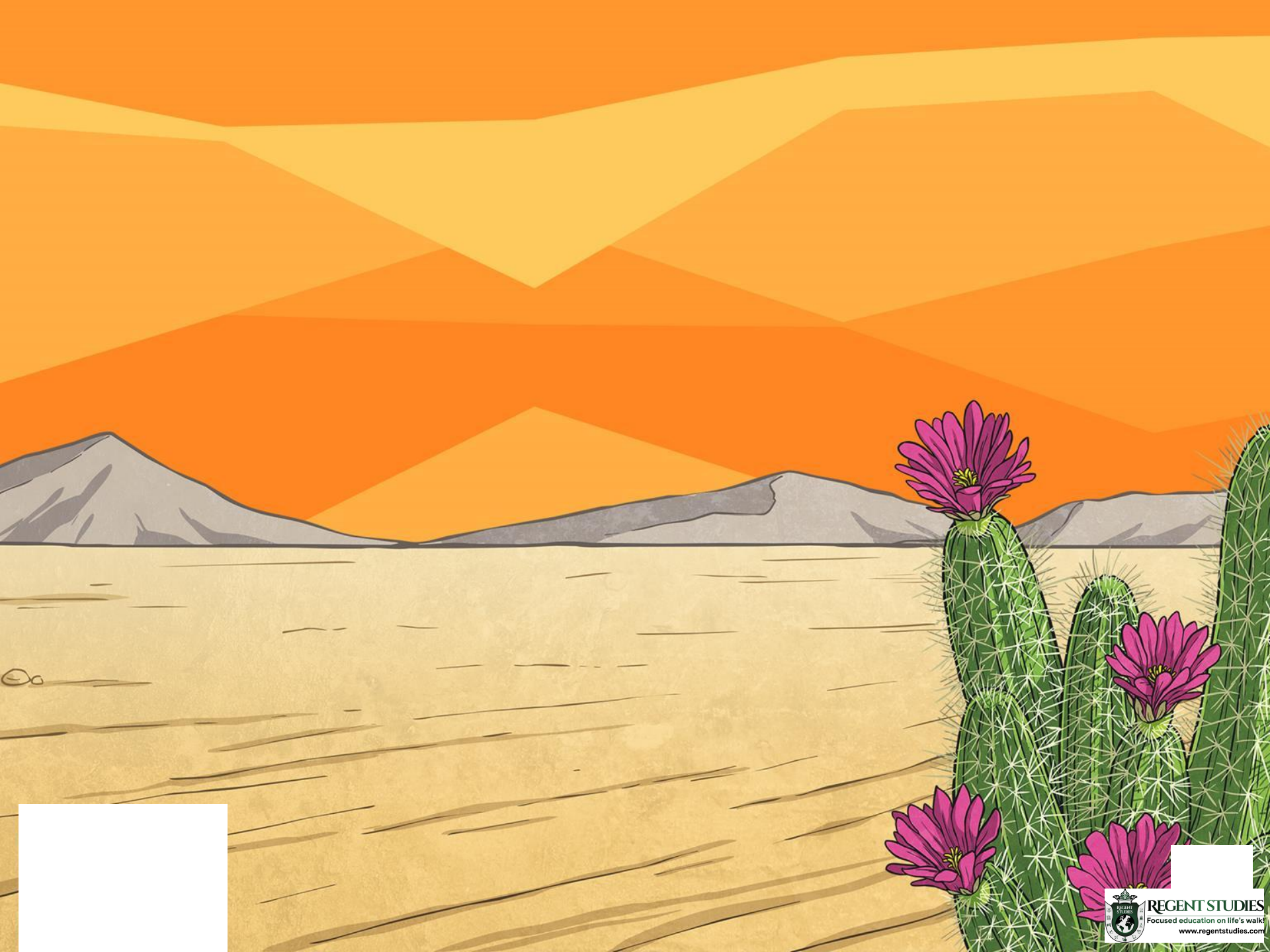
How do desert mice survive the lack of water in the desert?

That's correct!



Try again!

Try again!



REGENT STUDIES
Focused education on life's walk
www.regentstudies.com

